

TyCam Home Builders, Inc.

Presents



*The
Ashmore*

64'-0"

63'-4"

RADIUS WDW. FPL. RADIUS WDW. FRENCH DOOR

VAULTED FAMILY ROOM
18⁵ x 14⁰

ARCHED OPENING

STAIRS

OPEN RAIL

DBL. FRENCH DOORS

TRAY CLG.
Sitting
11⁵ x 10⁰

Covered Porch

Two Story Living Room
17³ x 16⁸

ARCHED OPENINGS

Hers

TRAY CLG.
Master Suite!
14⁰ x 17⁵

SEE-THRU FPL.

VAULTED BREAKFAST

RADIUS WDW.

VAULT

VAULT

Covered Porch

Kitchen

PANTRY

REF.

TRAY CLG.
Dining Room
14⁶ x 12⁹

ARCHED OPENINGS

Two Story Foyer

COATS

His

VAULTED M. BATH

SHWR.

SEAT

LAUND. SINK

LAUND.

W.

D.

PWDR.

COATS

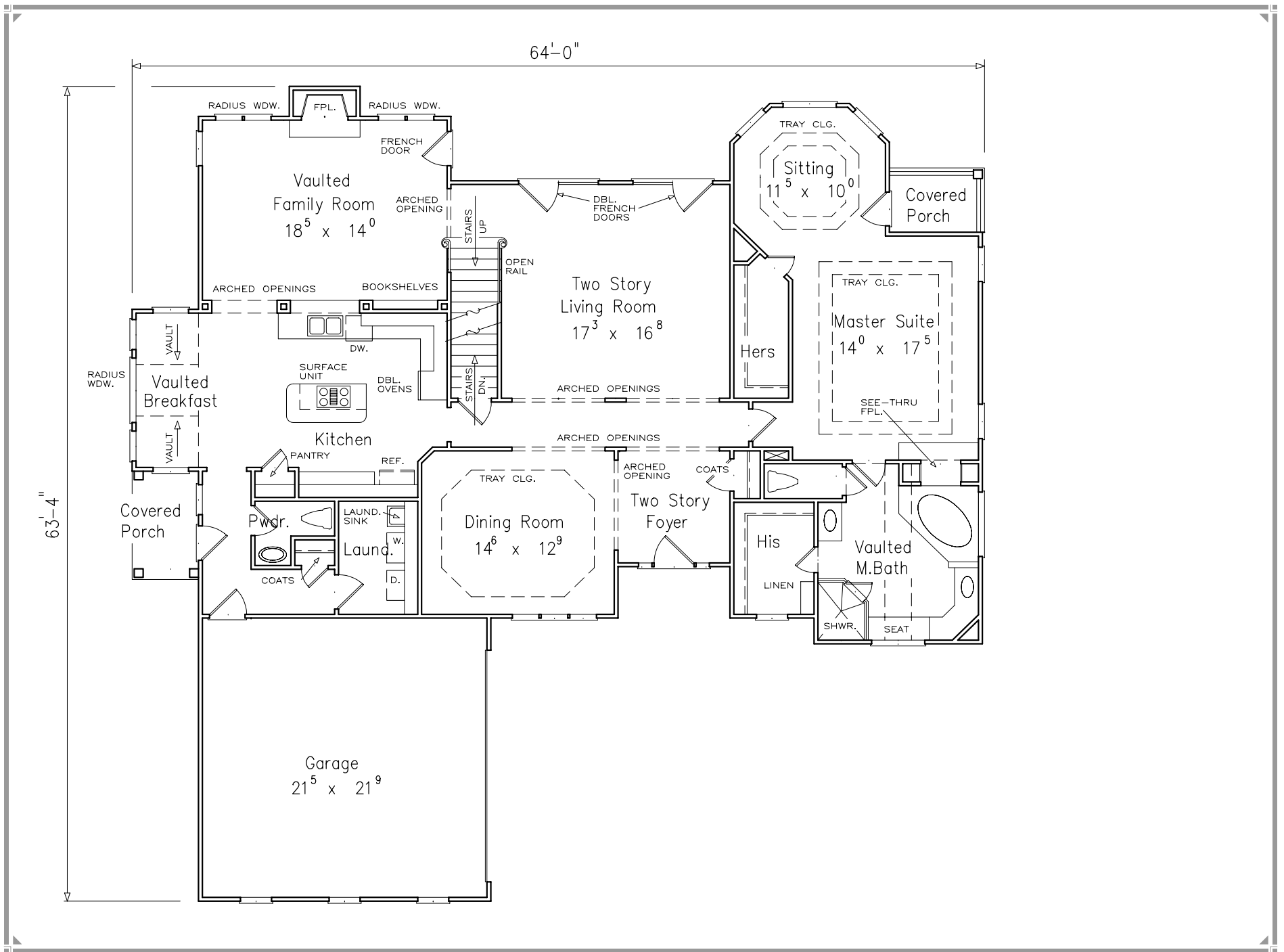
Garage
21⁵ x 21⁹

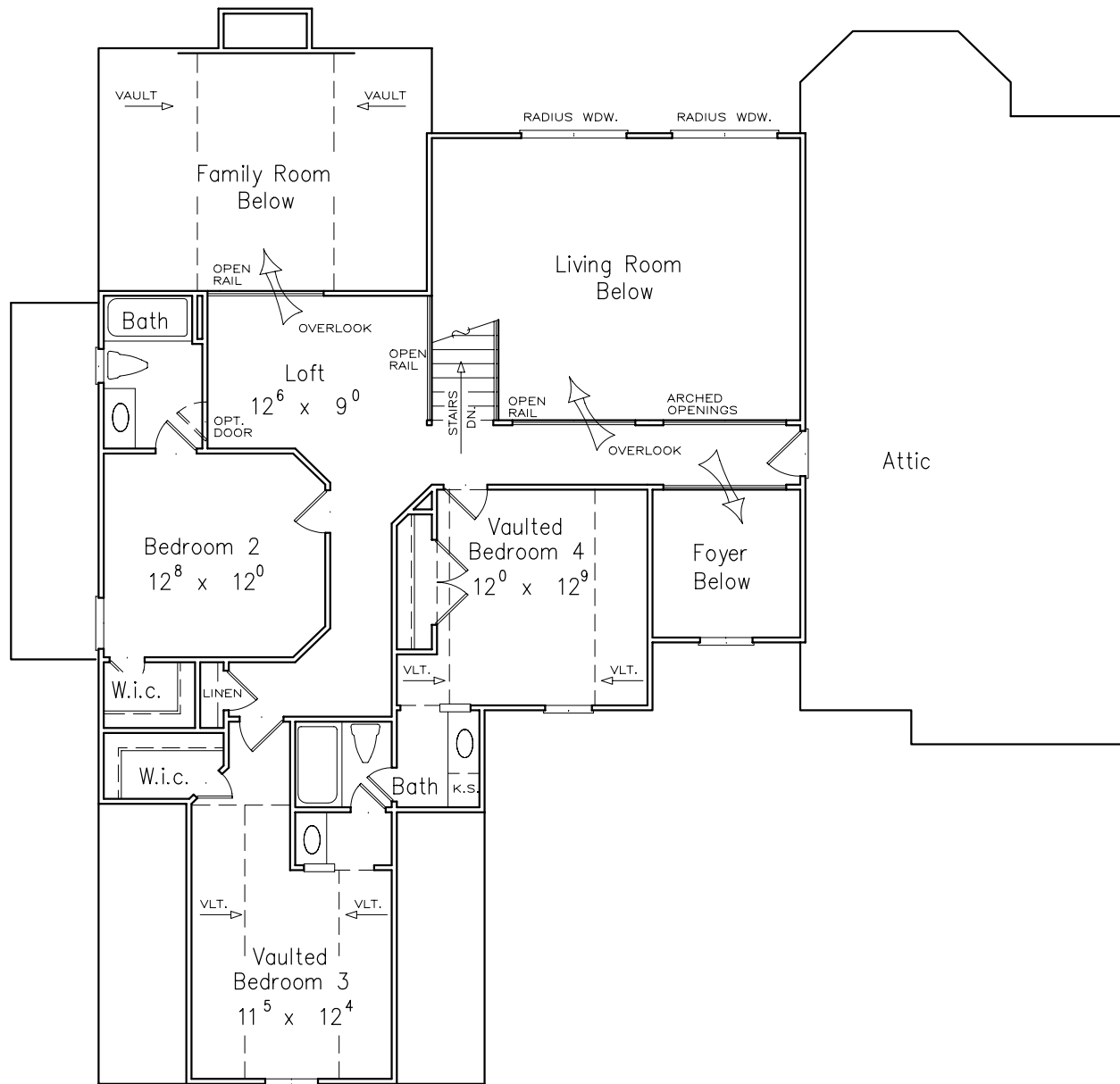
1st Floor Plan

2nd Floor Plan

Total Heated Sq. Ft. 3232







The Ashmore



Glorious Gables

The glorious gables that reach toward the blue sky give this home a stupendously noble look.

A two-story foyer offers passage to an eye-catching, two-story living room through an arched opening.

The remarkable gourmet kitchen features a large island and an intimate vaulted breakfast nook.

An octagonal sitting room, dual walk-in closets and an impressive private bath are showcased in the master suite.

Total Heated Sq. Ft. 3232