

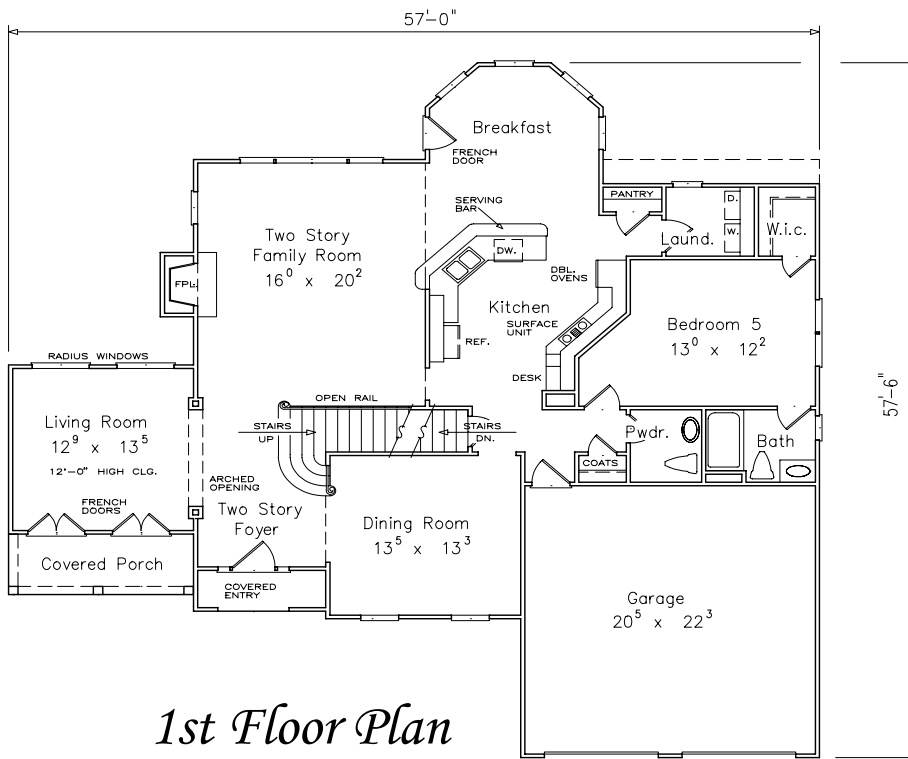
*TyCam Home Builders,  
Inc.*

*Presents*

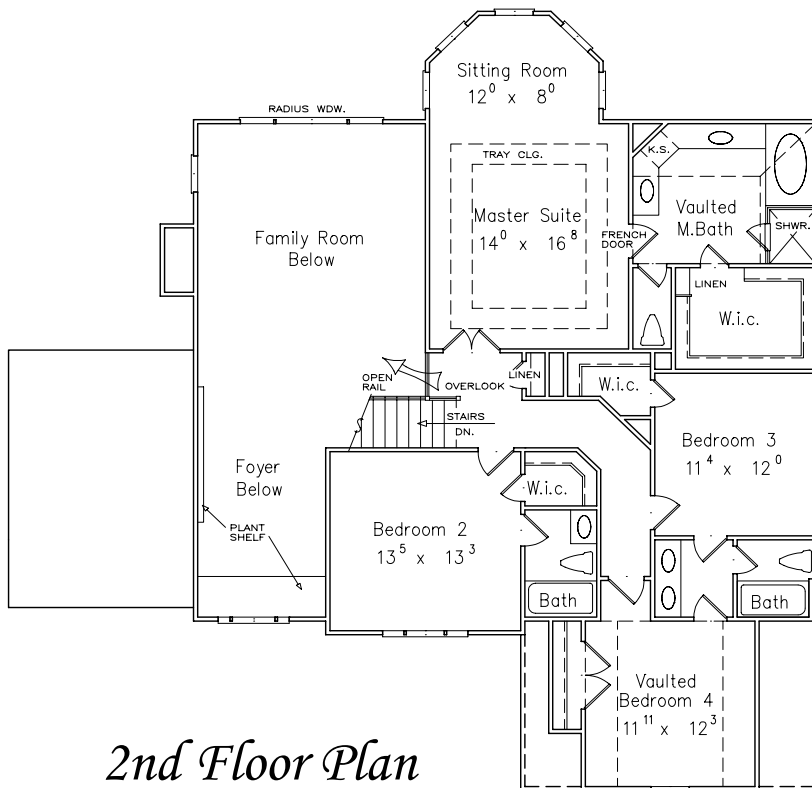


*The  
Kirkland*

# The Kirkland



1st Floor Plan



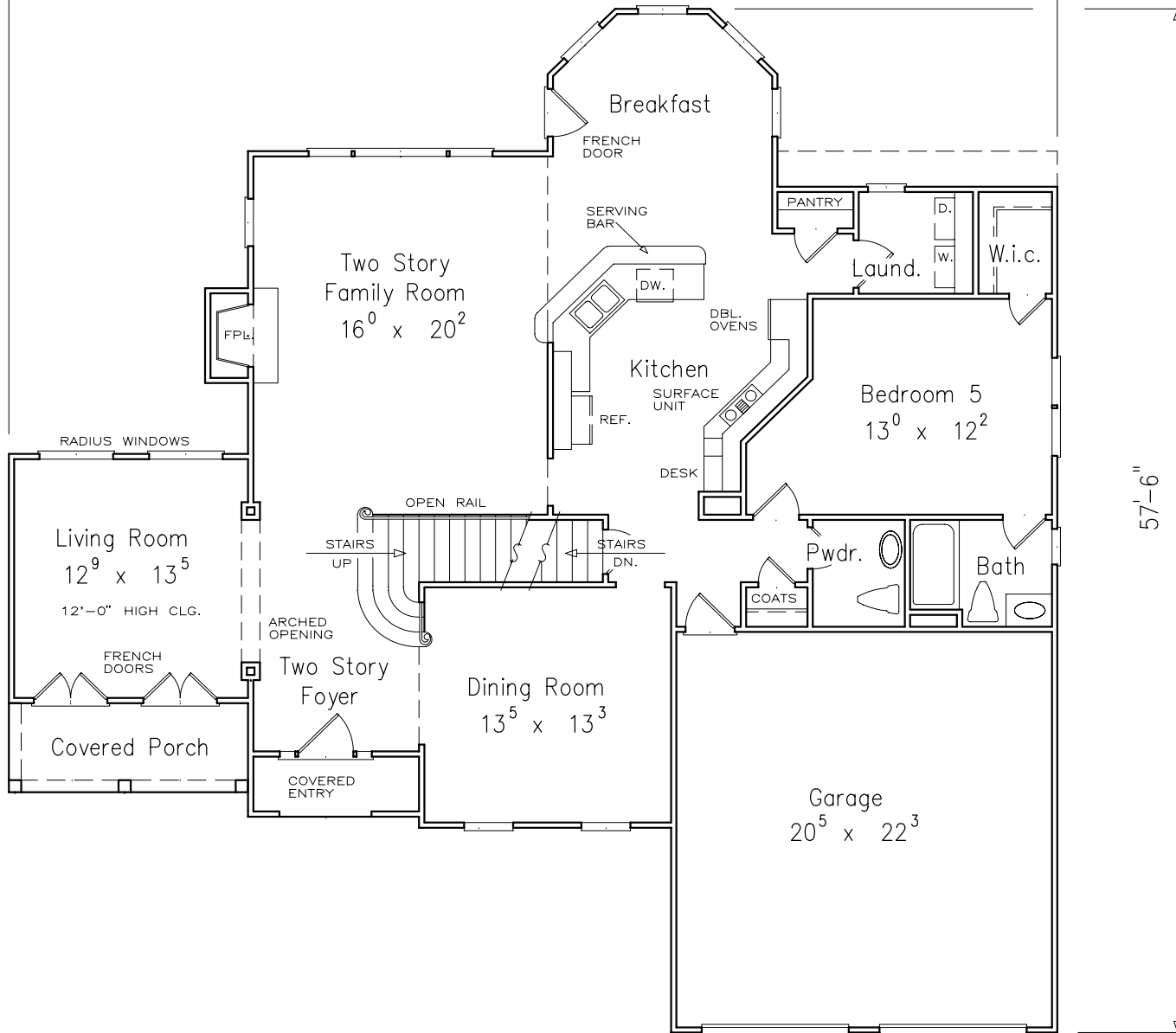
2nd Floor Plan

Total Heated Sq. Ft. 3223

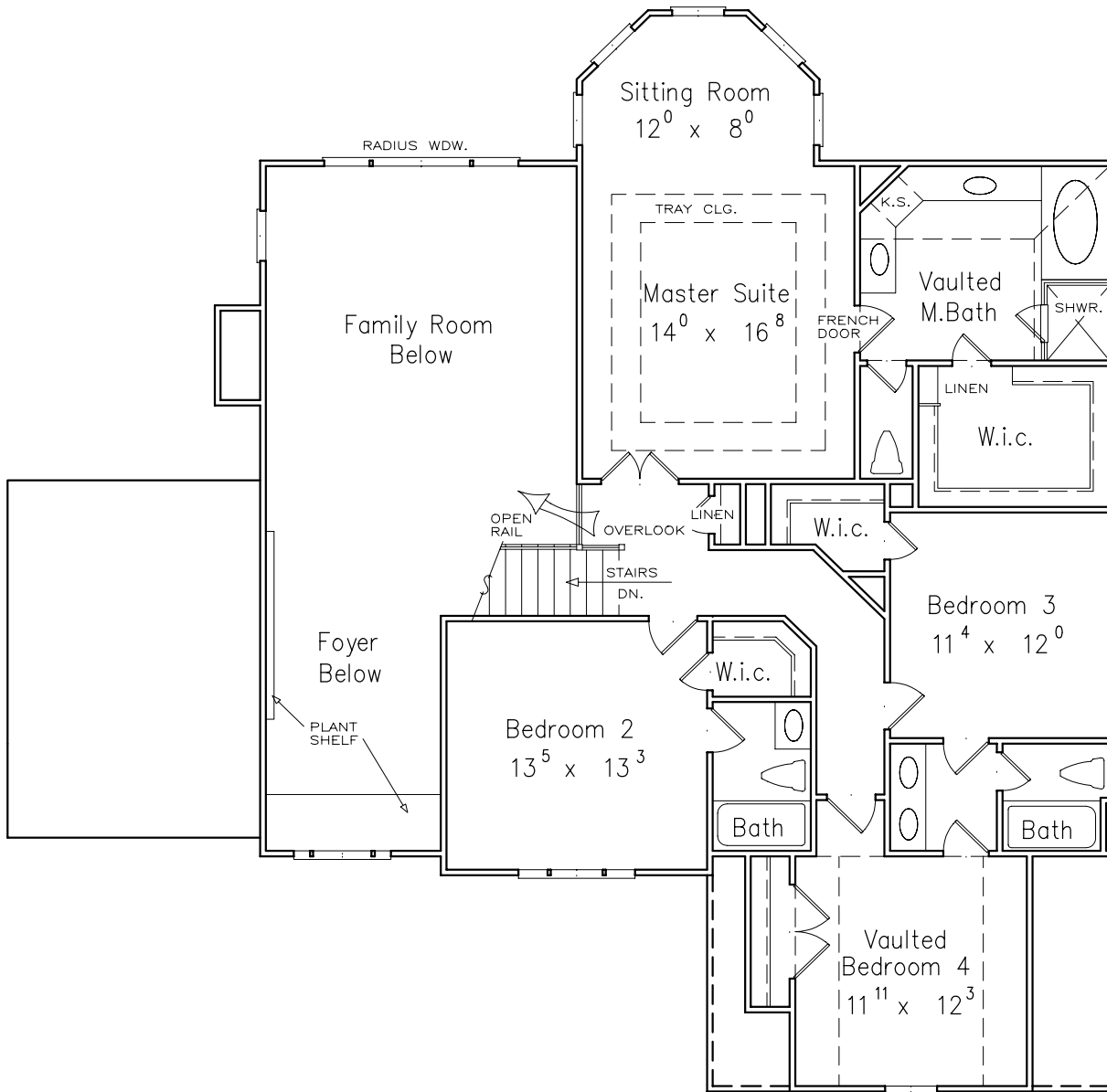




57'-0"



57'-6"



# *The Kirkland*



## *Beautiful Arches*

*Three beautiful arches, multiple gables and decorative details add charm and beauty to the facade of this two-story home.*

*Inside, an elegant archway leads to the formal living room, where two sets of French doors open to a peaceful front porch.*

*In the stylish master suite, highlights include a bayed sitting area, a tray ceiling and a grand private bath.*

*Total Heated Sq. Ft. 3223*