

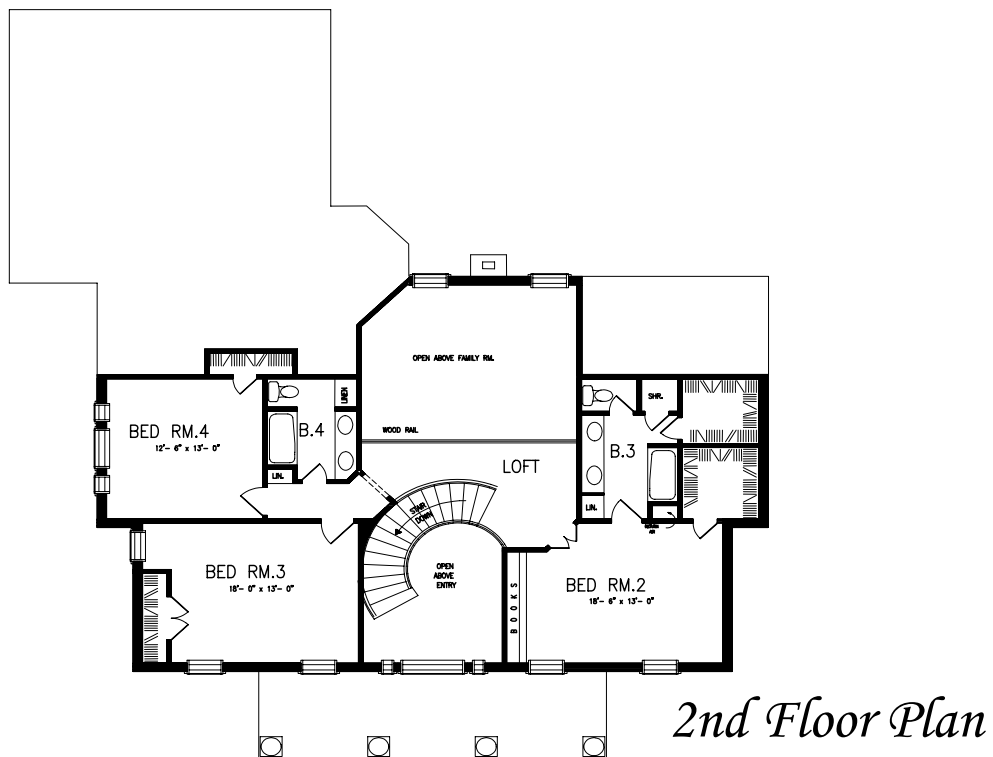
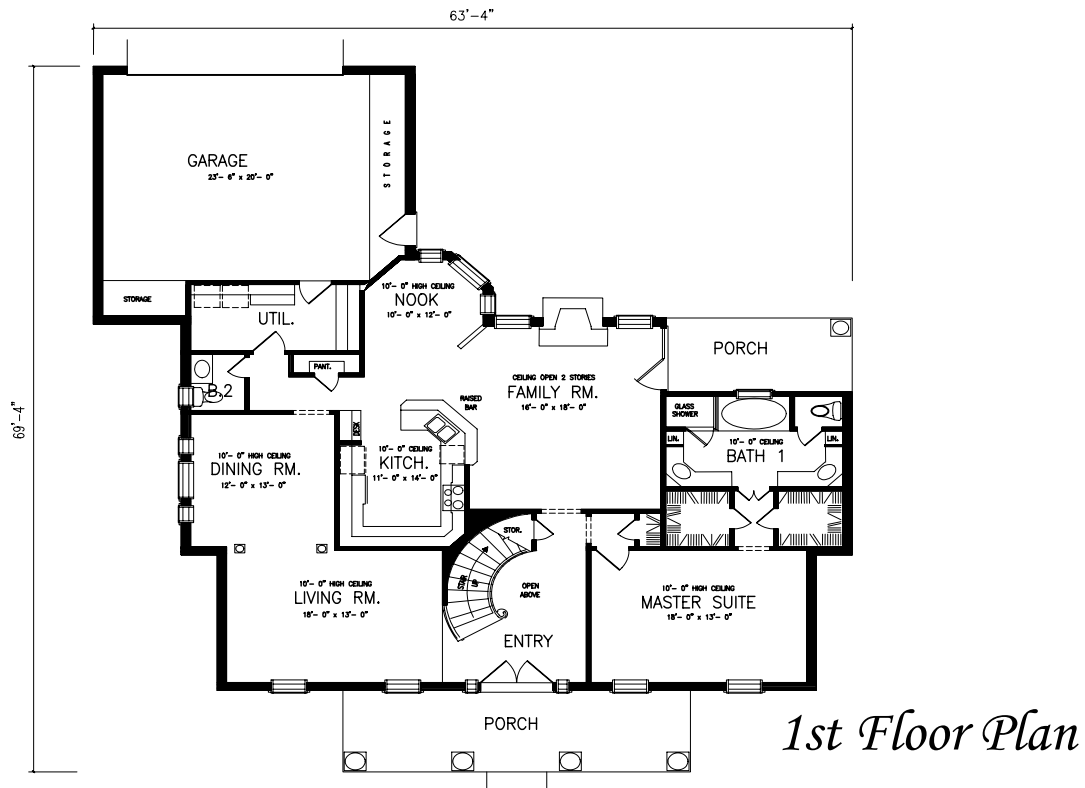
*TyCam Home Builders,  
Inc.*

*Presents*



*The  
Lexington*

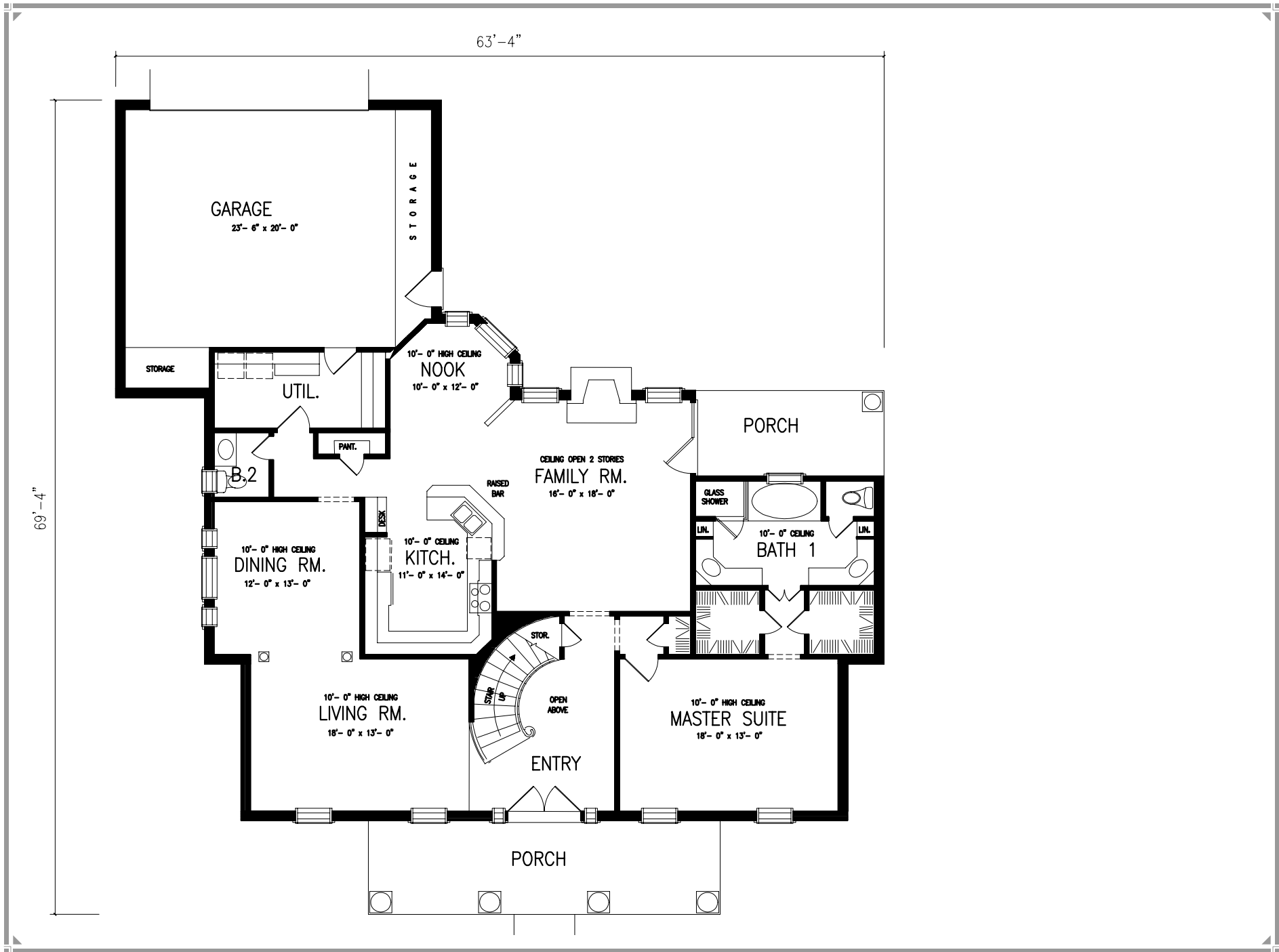
# The Lexington



Total Heated Sq. Ft. 3140







63'-4"

GARAGE  
23'-6" x 20'-0"

STORAGE

STORAGE

UTIL.

B.2

PAINT.

10'-0" HIGH CEILING  
NOOK  
10'-0" x 12'-0"

PORCH

CEILING OPEN 2 STORES  
FAMILY RM.  
16'-0" x 18'-0"

RAISED  
BAR

GLASS  
SHOWER

10'-0" CEILING  
BATH 1

10'-0" HIGH CEILING  
DINING RM.  
12'-0" x 13'-0"

10'-0" CEILING  
KITCH.  
11'-0" x 14'-0"

10'-0" HIGH CEILING  
MASTER SUITE  
18'-0" x 13'-0"

10'-0" HIGH CEILING  
LIVING RM.  
18'-0" x 13'-0"

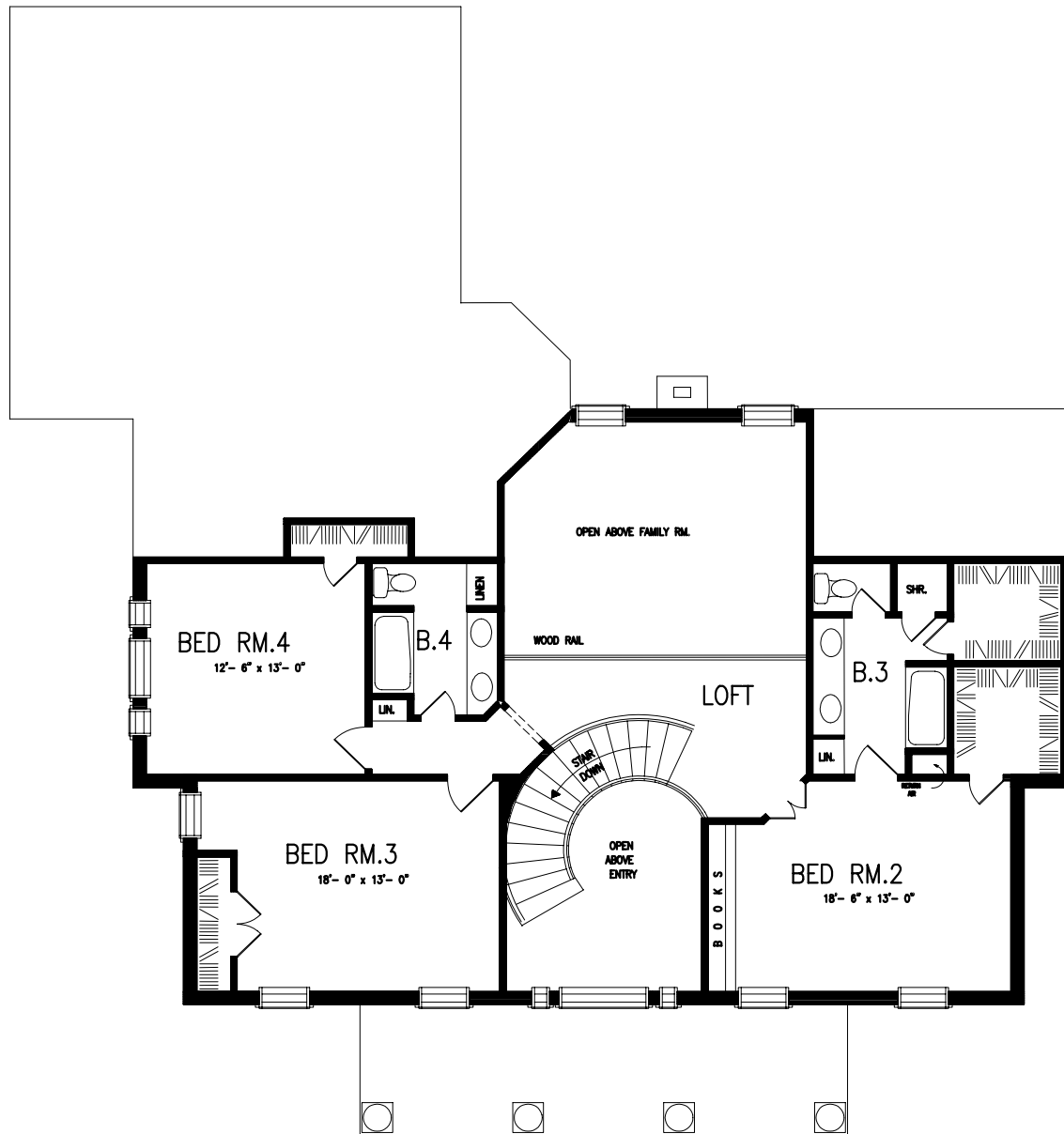
STOR.

OPEN  
ABOVE

ENTRY

PORCH

69'-4"



# *The Lexington*



## *Southern Feel*

*This home's regal porch features four stately columns, giving the home an unmistakable Southern feel.*

*Inside, the two-story entry showcases a spectacular curved staircase and a great view of the adjacent living room.*

*The family room straight ahead includes a warm fireplace and a fun snack bar.*

*Total Heated Sq. Ft. 3140*