

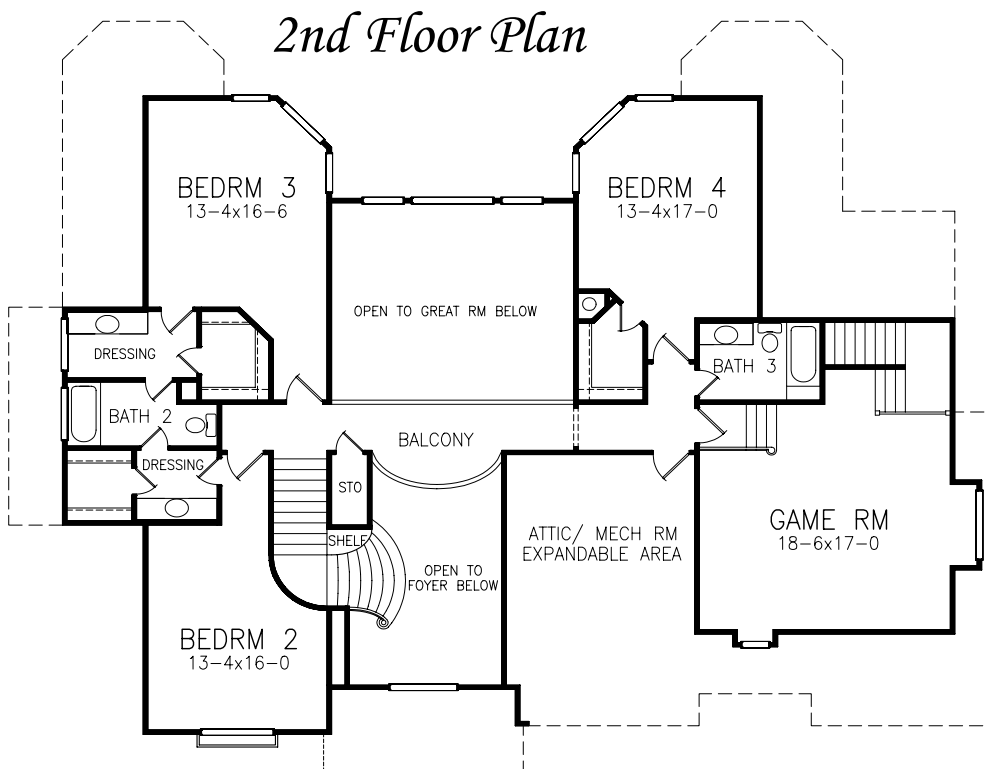
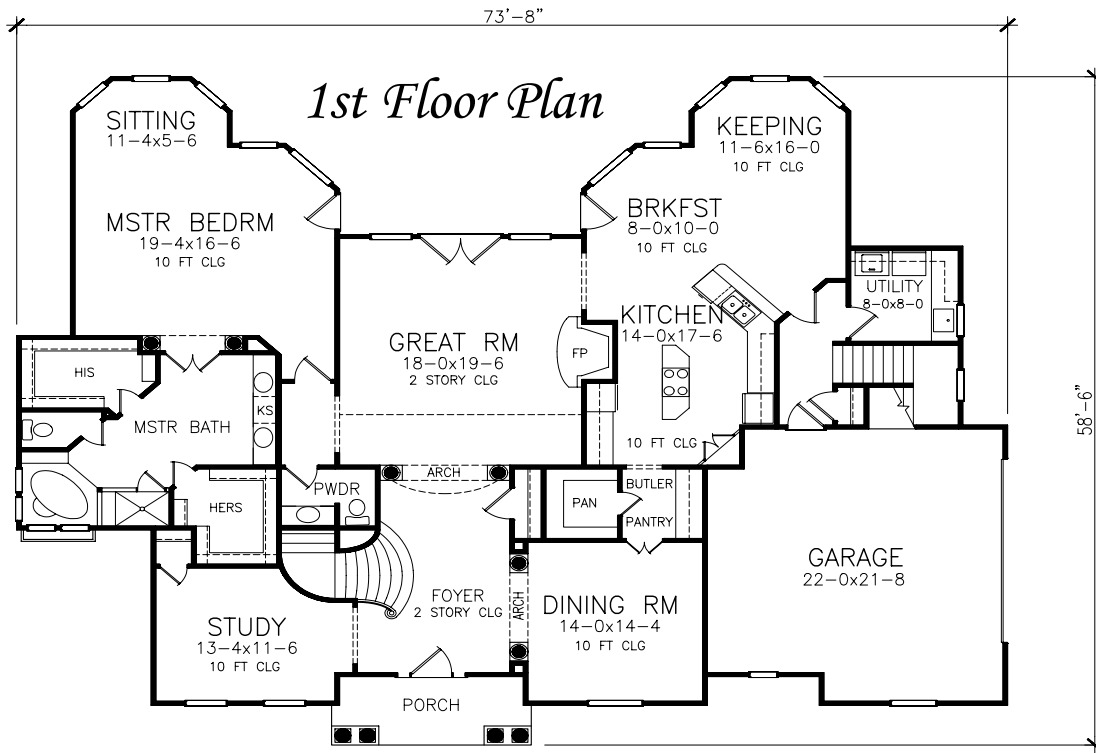
*TyCam Home Builders,  
Inc.*

*Presents*



*The  
Radford*

# The Radford



Total Heated Sq. Ft. 4264





73'-8"

58'-6"

SITTING  
11-4x5-6

KEEPING  
11-6x16-0  
10 FT CLG

MSTR BEDRM  
19-4x16-6  
10 FT CLG

BRKFST  
8-0x10-0  
10 FT CLG

GREAT RM  
18-0x19-6  
2 STORY CLG

KITCHEN  
14-0x17-6  
10 FT CLG

UTILITY  
8-0x8-0

HIS

MSTR BATH

KS

FP

HERS

PWDR

ARCH

PAN

PANTRY

BUTLER

GARAGE  
22-0x21-8

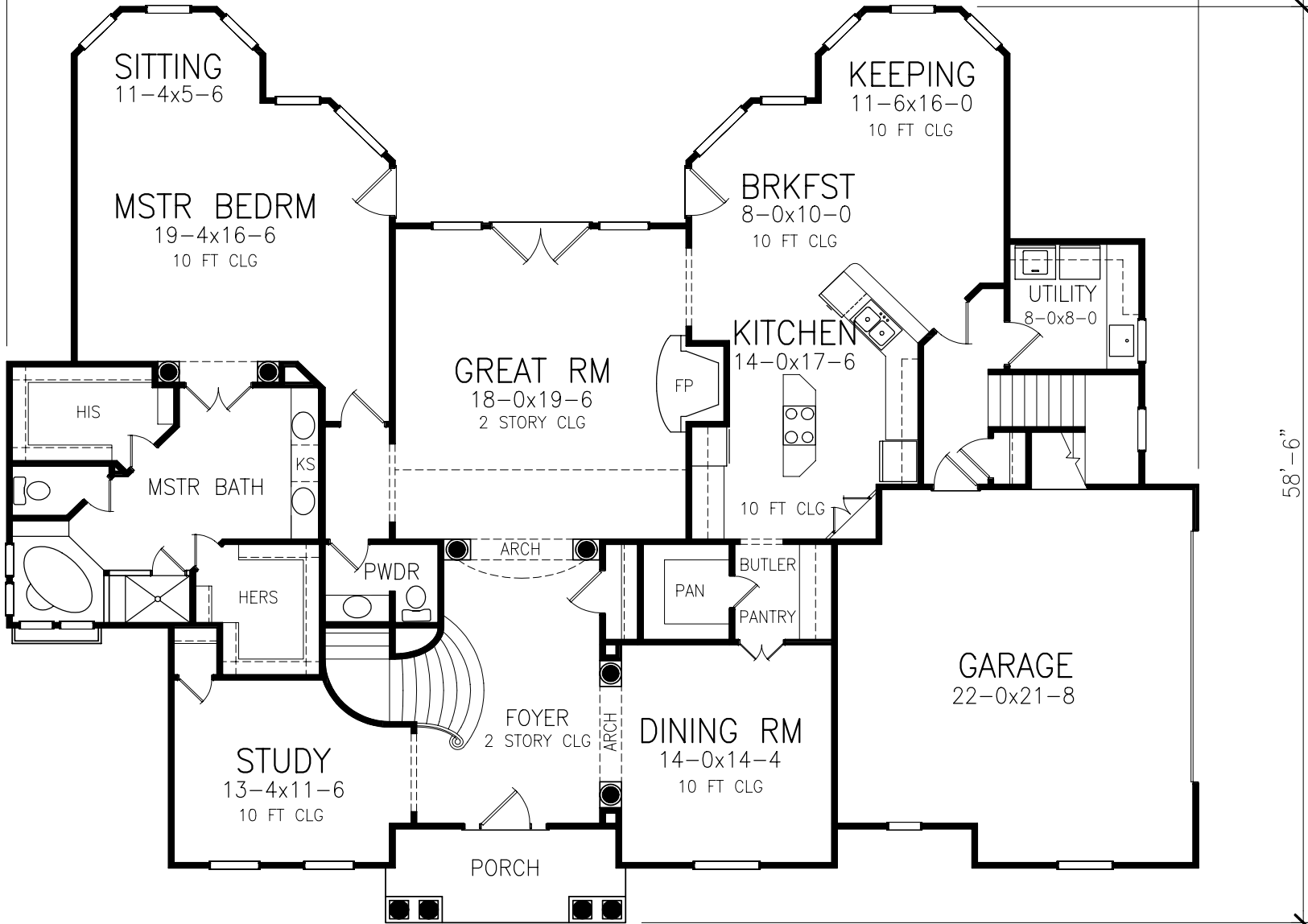
FOYER  
2 STORY CLG

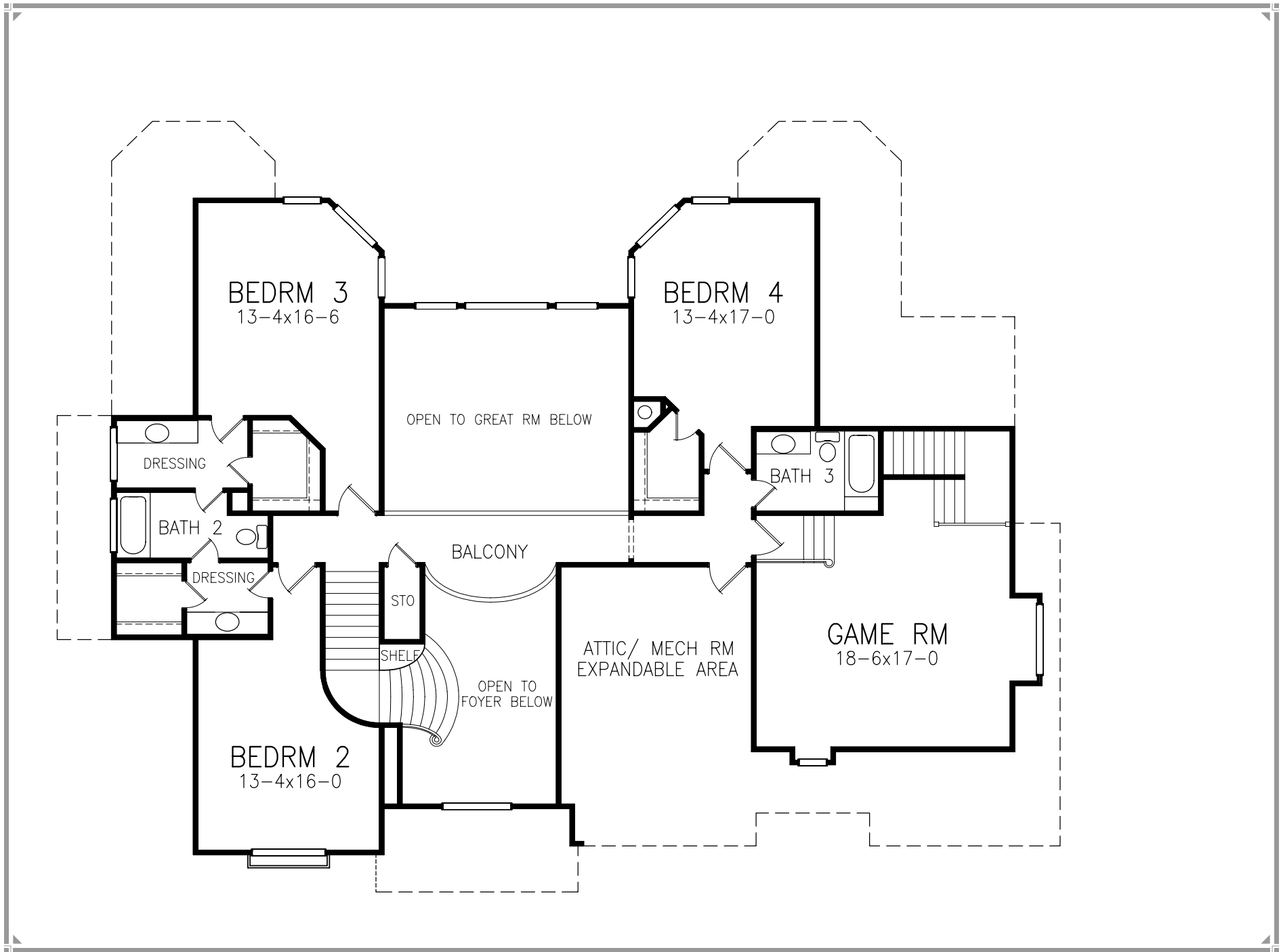
ARCH

DINING RM  
14-0x14-4  
10 FT CLG

STUDY  
13-4x11-6  
10 FT CLG

PORCH





# *The Radford*



## *Artistic Arches and Half-Round Windows*

*A two-story foyer flows between the study and the dining room and past a stylish flared stairway to the central Great Room, also with a two-story ceiling.*

*A raised ledge in the kitchen offers convenient service to the breakfast nook and the adjoining keeping room. A butler's pantry is just steps away from the dining room.*

*The master bedroom features a bayed sitting area and a garden bath with his-and-hers walk-in closets.*

*Upstairs, two more bedrooms share a full bath and a fourth bedroom has its own full bath.*

*Total Heated Sq. Ft. 4264*